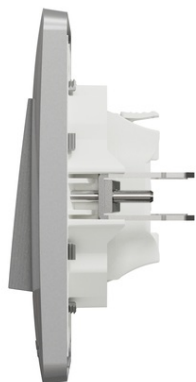


Furnizor: **Sc Trivolt Distribution SRL**
 Reg. com.: J23/3300/2016
 CIF: RO36421140
 Adresa: Strada Apusului nr 3 (primul
 sens giratoriu Tehodor Pallady-
 Autostrada Soarelui), Catelu, Ilfov
 Banca: BRD
 IBAN: RO34BRDE441SV13182234410



SCHNEIDER INTRERUPATOR, NEW UNICA, 10 A, CU STUDIO FRAME, ALUMINIU

Schneider Electric New Unica switch NU220130D is a complete mechanism in color aluminium and cream. This is a 1-pole 1-way switch that comes with a studio frame. The fixing mode of this device is long claws. Its rated current is 10A. It is 85 mm in width, 80 mm in height and 34 mm in depth with an embedding depth of 22 mm. It reaches IP20 degree of protection which is very high. Its connection terminals are screwless terminals. Being made of ABS (acrylonitrile butadiene-styrene) material, this switch is quite reliable and resistant. New Unica includes a suite of new designs, colors and materials. Users benefit from beautiful design that match their style and innovative products. New Unica is designed with clever features to be flexible, easy to understand and quick to install providing solutions for all customers requirements. Main

Range of product - New Unica
 Product or component type - Switch
 device presentation - Complete product
 Technology type - Electromechanical
 Switch function - 1-pole 1-way
 Number of rocker - 1
 Device application - Light control
 Colour tint - Aluminium
 Cream
 Type of packing - Flow-pack
 Complementary
 Rated current - 10 A
 10 AX
 [Ue] rated operational voltage - 250 V
 250 V
 Network type - AC
 AC
 Network frequency - 50/60 Hz
 50/60 Hz
 Electrical durability - 10000 cycles
 20000 cycles, cos phi = 0.6
 Insulation resistance - > 5 MOhm at 500 V
 Dielectric strength - 2000 V
 Minimum load breaking capacity - 200 operations 1.25 In and 1.1 Un, cos phi = 0.3
 Condition of use - Indoor
 Opening distance - > 3 mm
 Actuator - Rocker
 Number of modules - 2 modules
 Connections - terminals - Screwless terminals
 Cable cross section - 0.5-2.5 mm² rigid cable
 0.5-2.5 mm² flexible cable
 Material - ABS (acrylonitrile butadiene-styrene): cover frame
 ABS (acrylonitrile butadiene-styrene): mechanism cover
 Surface finish - Glossy
 specific treatment - integrated within the material - Painted
 Fixing mode - Long claws
 Width - 85 mm
 Height - 85 mm
 Depth - 34.25 mm
 Embedding depth - 21.15 mm
 Net weight - 0.054 kg
 Ambient air temperature for operation - -5 to 40 A°C
 Ambient air temperature for storage - -5 to 50 A°C
 Standards - EN 60669-1
 LV directive
 EMC directive
 Product certifications - CE
 AENOR
 EAC
 NF
 VDE
 Resistance to chemical agents - Resistant to alcohol (70 %)
 Resistant to alcohol (96 %)
 Resistant to A-Lactic Acid
 Resistant to diluted quaternary ammonium
 Resistant to diluted bleach
 Resistant to diluted ammonia
 Resistant to soapy water
 Resistant to crystal cleaner
 Resistant to hydrogen peroxide 10 volumes
 Resistant to hexane
 Environment
 IP degree of protection - IP4X
 IK degree of protection - IK04
 Environmental characteristic - Window-cleaning fluid
 Oil

Bleach
Liquid soap
Acetone
Petrol
Alcohol
UV resistant
Packing Units
Unit Type of Package 1 - PCE
Number of Units in Package 1 - 1
Package 1 Height - 5 cm
Package 1 Width - 8.5 cm
Package 1 Length - 8.5 cm
Package 1 Weight - 66 g
Unit Type of Package 2 - BB1
Number of Units in Package 2 - 10
Package 2 Height - 12 cm
Package 2 Width - 17.5 cm
Package 2 Length - 26 cm
Package 2 Weight - 795 g
Unit Type of Package 3 - S04
Number of Units in Package 3 - 80
Package 3 Height - 30 cm
Package 3 Width - 40 cm
Package 3 Length - 60 cm
Package 3 Weight - 7.063 kg
Pret: 0,00 lei (TVA inclus)

Detalii online: <https://www.materialelectrice.ro/intrerupator-new-unica-10-a-cu-studio-frame-aluminiu-319088>