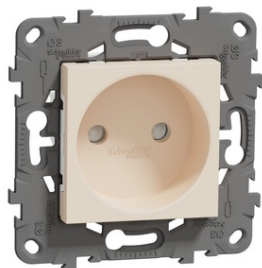


Furnizor: **Sc Trivolt Distribution SRL**
Reg. com.: J23/3300/2016
CIF: RO36421140
Adresa: Strada Apusului nr 3 (primul
sens giratoriu Tehodor Pallady-
Autostrada Soarelui), Catelu, Ilfov
Banca: BRD
IBAN: RO34BRDE441SV13182234410



**SCHNEIDER PRIZA, NEW UNICA, MECANISM CU RAMA FIXARE, 2P,
16A, EUROPEAN, CU OBTURATSAU, IP4X, LUCIOS, NETRATAT, BEJ**

Schneider Electric New Unica socket-outlet NU503344 is a mechanism with zamak fixing frame in color beige. The outlet pole configuration of this socket-outlet is 2P with shutters, ensuring safety protection. And this device is European standard. The dielectric strength of this socket-outlet is 2000V. Its rated current is 16A. The fixing mode of this device is screws or claws. It is 74.5 mm in width, 74.5 mm in height and 37 mm in depth with an embedding depth of 27.5 mm. Its matching mounting box can be recessed into the surface of the wall with flush type. The surface finish is glossy, delivering an elegant and high-end feeling to a room. The IP rating of this device is IP21D which is very high. It reaches IK04 protection level, which can help protect against impact. Its connection terminals are screw terminals. Being made of Cu.Zn37, PC (polycarbonate) GF10 FR, zamak material, this socket-outlet is quite reliable and resistant. This socket-outlet is AENOR, EAC, NF certified. New Unica includes a suite of new designs, colors and materials. Users benefit from beautiful design that match their style and innovative products. New Unica is designed with clever features to be flexible, easy to understand and quick to install providing solutions for all customers requirements. Main

Range - New Unica

Product or component type - Socket-outlet

device presentation - Mechanism with zamak fixing frame

device mounting - Flush

Socket number - 1

Outlet poles configuration - 2P

outlet standard - European

Rated current - 16 A

Complementary

Device application - Power supply

Cover type - With shutter

[Ue] rated operational voltage - 250 V

Network type - AC

Network frequency - 50/60 Hz

Number of modules - 2 modules

Fixing mode - Screws or claws

Colour tint - Beige (RAL 1013)

Connections - terminals - Screw terminals

Cable cross section - 0.5-4 mm² cable(s), 2 - cable stiffness: flexible

0.5-4 mm² cable(s), 2 - cable stiffness: rigid

Minimum load breaking capacity - 100 operations 1.25 In and 1.1 Un, cos phi = 0.6

Electrical durability - 10000 cycles, cos phi = 0.8

Insulation resistance - > 5 MOhm at 500 V

Dielectric strength - 2000 V

Material - PC: mechanism cover

PC (polycarbonate) GF10 FR: casing

CuZn37: terminals

Zamak: fixing frame

Surface finish - Glossy

Quantity per set - Set of 1 flow-pack

Standards - IEC 60884-1

UNE 20315-1-1

UNE 20315-1-2

NF C 61-314

Product certifications - NF

EAC

AENOR

Embedding depth - 27.5 mm

Depth - 37 mm

Width - 74.5 mm

Height - 74.5 mm

Net weight - 0.0615 kg

Surface treatment - Untreated

Resistance to chemical agents - Resistant to alcohol (70 %)

Resistant to alcohol (96 %)

Resistant to A-Lactic Acid

Resistant to diluted quaternary ammonium

Resistant to diluted bleach

Resistant to diluted ammonia

Resistant to soapy water

Resistant to crystal cleaner

Resistant to hydrogen peroxide 10 volumes

Resistant to hexane

Environment

Ambient air temperature for operation - -5 to 35 A°C

Ambient air temperature for storage - -5 to 50 A°C

IK degree of protection - IK04

IP degree of protection - IP4X

Environmental characteristic - Acetone

Bleach

UV resistant

Petrol
Oil
Alcohol
Window-cleaning fluid
Liquid soap
Packing Units
Unit Type of Package 1 - PCE
Number of Units in Package 1 - 1
Package 1 Height - 4.0 cm
Package 1 Width - 7.5 cm
Package 1 Length - 7.5 cm
Package 1 Weight - 28.0 g
Unit Type of Package 2 - CAR
Number of Units in Package 2 - 10
Package 2 Height - 8.2 cm
Package 2 Width - 19.7 cm
Package 2 Length - 22.6 cm
Package 2 Weight - 385.0 g
Unit Type of Package 3 - S04
Number of Units in Package 3 - 120
Package 3 Height - 30.0 cm
Package 3 Width - 40.0 cm
Package 3 Length - 60.0 cm
Package 3 Weight - 5.41 kg
Pret: 0,00 lei (TVA inclus)

Detalii online: <https://www.materialelectrice.ro/priza-new-unica-mecanism-cu-rama-fixare-2p-16a-european-cu-obturatsau-ip4x-lucios-netratat-bej-318846>