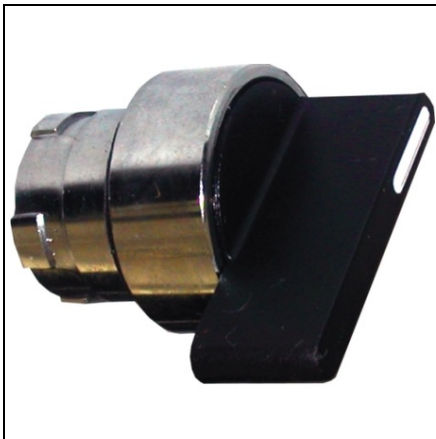


Furnizor: **Sc Trivolt Distribution SRL**
Reg. com.: J23/3300/2016
CIF: RO36421140
Adresa: Strada Apusului nr 3 (primul
sens giratoriu Tehodor Pallady-
Autostrada Soarelui), Catelu, Ilfov
Banca: BRD
IBAN: RO34BRDE441SV13182234410



COMTEC CAP SELECTOR SELECTOR LUNG 1-0-2 REVENIRE

Tensiune nominala: 600V a.c.
Tensiune de impuls: 6kV
Curent termic nominal: 10A
Curent nominal: 3A (240V; 50HZ; AC15); 0.3A (240V c.c: DC13)
Sectiune conductor de racord: 1x0.5...1x2.5 mm (2x1.5mm)
Borna: clema cu surub
Domeniul de temperatura: - 25...+ 70 grade C
Grad de protectie: IP 42 (dupa montare)
Fiabilitate: 1x 1000000 cicluri de comutare
Grosime placa de montare: 6 mm max.
Diametru gaura de decupare: 22 mm
Pret: 7,03 lei (TVA inclus)

Detalii online: <https://www.materialelectrice.ro/cap-selector-selector-lung-1-0-2-revenire-318122>