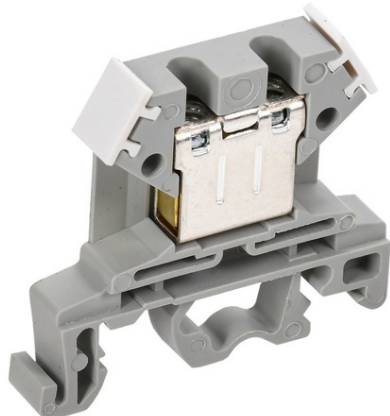


Furnizor: **Sc Trivolt Distribution SRL**
Reg. com.: J23/3300/2016
CIF: RO36421140
Adresa: Strada Apusului nr 3 (primul
sens giratoriu Tehodor Pallady-
Autostrada Soarelui), Catelu, Ilfov
Banca: BRD
IBAN: RO34BRDE441SV13182234410

IEK CLEMA ZNI-6MM2 (JXB50A) GRI



These terminal blocks serve for safe and compact connection of phase, neutral and protective (ground) conductors of various size. They are installed onto a DIN-rail. The set is completed with a marking band for number inscription and side blinds for ZNI series screw terminal blocks. Color: blue, gray, green. Terminal clamps can be covered with plastic blinds of correspondent size and color. They are made of colored non-inflammable polyamide of yellowish-green (grounding), blue (neutral), gray and green (phase) color. The set is completed with a marking band for number inscription. They are made of colored non-inflammable polyamide. Connectable conductor cross

section solid-core: 0,5...10

Connectable conductor cross section multi-wired: 0,5...6

Rated current In: 50

Nominal rated voltage: 600

Type of electrical connection 2: EV000415

Connection position: EV001224

Number of poles: 1

Number of clamp positions per pole: 2

Mounting method: EV005503

Material insulation body: EV000402

Operation temperature: -40...+80

Inflammability class of insulation material acc. with UL94: EV004429

Width/grid dimension: 8.0

Length: 42,0

Colour: EV000270

Nominal operating AC voltage U_e : 600

Nominal DC operating voltage U_e : 440

Nominal frequency: 50

Rated insulation voltage U_i : 660

Max. conductor cross section: 6

Material clamp: EV000179

Material housing: EV000402

Ambient class: IEK_V0000009

Degree of protection (IP): EV006405

Width: 8,0

Height: 46,0

Nominal Attachment Capacity: 2,5...6

Model: EV005828

Current-carrying part material: EV000149

Type of electrical connection 1: EV000415

Pret: 2,80 lei (TVA inclus)

Detalii online: <https://www.materialelectrice.ro/clema-zni-6mm2-jxb50a-gri-309353>