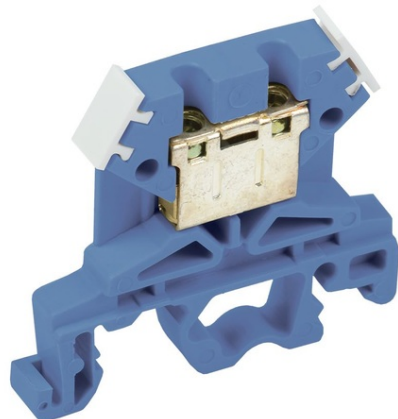


Furnizor: **Sc Trivolt Distribution SRL**
Reg. com.: J23/3300/2016
CIF: RO36421140
Adresa: Strada Apusului nr 3 (primul
sens giratoriu Tehodor Pallady-
Autostrada Soarelui), Catelu, Ilfov
Banca: BRD
IBAN: RO34BRDE441SV13182234410



IEK CLEMA ZNI-4MM2 (JXB35A) ALBASTRU

These terminal blocks serve for safe and compact connection of phase, neutral and protective (ground) conductors of various size. They are installed onto a DIN-rail. The set is completed with a marking band for number inscription and side blinds for ZNI series screw terminal blocks. Color: blue, gray, green. Terminal clamps can be covered with plastic blinds of correspondent size and color. They are made of colored non-inflammable polyamide of yellowish-green (grounding), blue (neutral), gray and green (phase) color. The set is completed with a marking band for number inscription. They are made of colored non-inflammable polyamide. Connectable conductor cross

section solid-core: 0,2...6

Connectable conductor cross section multi-wired: 0,2...4

Rated current In: 35

Nominal rated voltage: 600

Type of electrical connection 2: EV000415

Connection position: EV001224

Number of poles: 1

Number of clamp positions per pole: 2

Mounting method: EV005503

Material insulation body: EV000402

Operation temperature: -40...+80

Inflammability class of insulation material acc. with UL94: EV004429

Width/grid dimension: 6.3

Length: 41,5

Colour: EV000080

Nominal operating AC voltage U_e : 600

Nominal DC operating voltage U_e : 440

Nominal frequency: 50

Rated insulation voltage U_i : 660

Max. conductor cross section: 4

Material clamp: EV000179

Material housing: EV000402

Ambient class: IEK_V0000009

Degree of protection (IP): EV006405

Width: 6,3

Height: 45,5

Nominal Attachment Capacity: 1,5...4

Model: IEK_V0000471

Current-carrying part material: EV000149

Type of electrical connection 1: EV000415

Pret: 2,09 lei (TVA inclus)

Detalii online: <https://www.materialelectrice.ro/clema-zni-4mm2-jxb35a-albastru-309352>