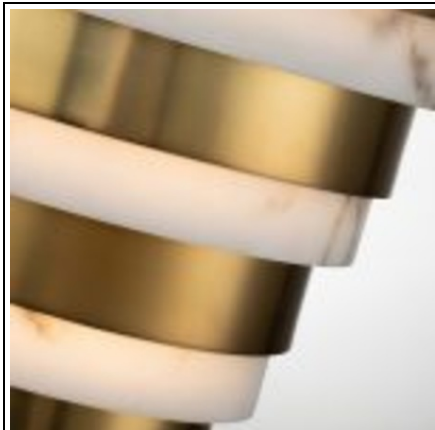


Furnizor: **Sc Trivolt Distribution SRL**
Reg. com.: J23/3300/2016
CIF: RO36421140
Adresa: Strada Apusului nr 3 (primul
sens giratoriu Tehodor Pallady-
Autostrada Soarelui), Catelu, Ilfov
Banca: BRD
IBAN: RO34BRDE441SV13182234410



ELSTEAD-LIGHTING ECHELON LED WALL LIGHT

Breathing inspiration drawn from the classic style of Art Deco, Echelon, from Hinkley's Lisa McDennon Collection, is a multi-tier style in a gleaming Heritage Brass finish. Through her global travels, Lisa McDennon pulls captivating style and trends and incorporates them into her product designs. Box Dimensions: 46.99 x 38.74 x 31.75
Depth: 153mm
Height: 357mm
Build Materials: Steel, Faux Alabaster
Gross Weight: 4.67kg
Fixture Weight: 3.68kg
Width: 305mm
Socket: Integrated LED
Number of Bulbs: 1
Bulb Included: 1 x 12W Integrated LED
Maximum Wattage: 12W
Class: Class I Finish: Heritage Brass
Interior/Exterior: Interior
Brand: Hinkley, Quintiesse
Pret: 3 582,79 lei (TVA inclus)

Detalii online: <https://www.materialelectrice.ro/echelon-led-wall-light-301048>