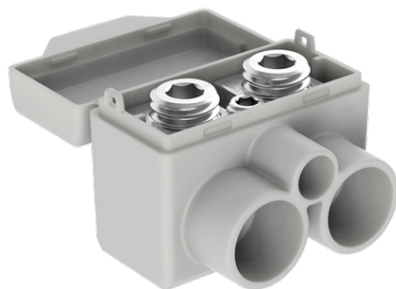


Furnizor: **Sc Trivolt Distribution SRL**
Reg. com.: J23/3300/2016
CIF: RO36421140
Adresa: Strada Apusului nr 3 (primul
sens giratoriu Tehodor Pallady-
Autostrada Soarelui), Catelu, Ilfov
Banca: BRD
IBAN: RO34BRDE441SV13182234410



**MOREK SLT50-2-1 GREY AL 16-50/CU 2,5-35 + 1X1,5-6MM2 1000V
DISTRIBUTION BLOCK**

SKU: MAS2051A10
EAN: 4744397024268
Culoare: Grey
Material conductor: Al/Cu
Sectiune min. (mm²): 1,5
Sectiune max. (mm²): 50
Insert cablu min. (mm²): 1,5
Insert cablu max. (mm²): 50
Iesire Conductor min. (mm²): 1,5
Iesire Conductor max. (mm²): 50
Numar de conexiuni: 3
Nominal current (A): 135 / 145
Tensiune nominala (V): 1000
Service temperature (°C): 80°C
Material: Tin-plated aluminium, polyamide PA66
Latime (mm): 38
Lungime (mm): 29
Inaltime (mm): 30
Greutate (g): 33
Surub: Hex 5, Hex 3
Tightening torque (Nm): 3 Nm (2,5-16 mm²) 8 Nm (25-50 mm²) 2Nm (1,5-6 mm²)
IP rating: IP23
Certification: EN 60947-7-1:2009, EN 61238-1:2003
CN8 code: 85369010
Package quantity (pcs): 18
Pret: 41,08 lei (TVA inclus)

Detalii online: <https://www.materialeelectrice.ro/slt50-2-1-grey-al-16-50-cu-2-5-35-1x1-5-6mm2-1000v-distribution-block-165886>