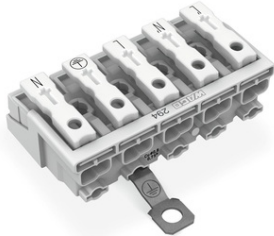


Furnizor: **Sc Trivolt Distribution SRL**  
Reg. com.: J23/3300/2016  
CIF: RO36421140  
Adresa: Strada Apusului nr 3 ( primul  
sens giratoriu Tehodor Pallady-  
Autostrada Soarelui), Catelu, Ilfov  
Banca: BRD  
IBAN: RO34BRDE441SV13182234410



**WAGO LIGHTING CONNECTOR; PUSH-BUTTON, EXTERNAL; WITH  
SCREW-TYPE GROUND CONTACT; L<sup>ˆ</sup>N<sup>ˆ</sup>-L-PE-N; 5-POLE;  
LIGHTING SIDE: FOR SOLID CONDUCTORS; INST. SIDE: FOR ALL  
CONDUCTOR TYPES; MAX. 2.5 MM<sup>ˆ</sup>2; SURROUNDING AIR  
TEMPERATURE: MAX 85<sup>ˆ</sup>C (T85); 2,50 MM<sup>ˆ</sup>2; WHITE**

Ratings per: IEC/EN 60998-1;  
Ratings (note): Connection points;  
Tensiune nominala (II/2): 500; V  
Tensiune nominala de supratensiune (II/2): 4; kV  
Curent nominal: 24; A  
Ratings per: IEC/EN 60998-2-2;  
Ratings (note) 2: Connection points;  
Tensiune nominala (II/2) 2: 500; V  
Tensiune nominala de supratensiune (II/2) 2: 4; kV  
Curent nominal 2: 24; A  
Curent nominal 3: 16; A  
Legend (ratings): (II / 2)  $\hat{\%}$ ™ Overvoltage category II / Pollution degree 2;  
Connection type (1): External 1;  
Tehnologie conexiune: Push-in CAGE CLAMP®;  
Number of connection points (connection type): 2;  
Tip actionare: Operating tool; Push-button;  
Connectable conductor materials: Copper;  
Solid conductor: 0,5 ... 2,5 mm<sup>2</sup> / 18 ... 12 AWG;  
Solid conductor; push-in termination: 0,5 ... 2,5 mm<sup>2</sup> / 18 ... 12 AWG;  
Stranded conductor: 0,5 ... 2,5 mm<sup>2</sup> / 18 ... 14 AWG;  
Fine-stranded conductor: 0,5 ... 2,5 mm<sup>2</sup> / 18 ... 14 AWG;  
Fine-stranded conductor; with insulated ferrule: 0,5 ... 1,5 mm<sup>2</sup> / 18 ... 16 AWG;  
Fine-stranded conductor; with uninsulated ferrule: 0,5 ... 1,5 mm<sup>2</sup> / 18 ... 16 AWG;  
Fine-stranded conductor; with ferrule; push-in termination: 0,5 mm<sup>2</sup> / 18 AWG;  
Strip length: 8 ... 9 mm / 0.31 ... 0.35 inch;  
Numar poli: 5;  
Connection type 2: Internal 2;  
Tehnologie conexiune 2: PUSH WIRE®;  
Number of connection points: 1;  
Solid conductor 2: 0,5 ... 2,5 mm<sup>2</sup> / 18 ... 14 AWG;  
Fine-stranded conductor; with insulated ferrule 2: 0,5 ... 1 mm<sup>2</sup> / 18 ... 16 AWG;  
Fine-stranded conductor; with uninsulated ferrule 2: 0,5 ... 1,5 mm<sup>2</sup> / 18 ... 14 AWG;  
Strip length 2: 8 ... 9 mm / 0.31 ... 0.35 inch;  
Connection type (3): Internal 3;  
Number of connection points: 1;  
Solid conductor 3: 0,5 ... 1,5 mm<sup>2</sup> / 18 ... 16 AWG;  
Fine-stranded conductor; with insulated ferrule 3: 0,5 ... 0,75 mm<sup>2</sup> / 18 AWG 0.5 ...  
0.75mm<sup>2</sup> / 18 AWG;  
Fine-stranded conductor; with uninsulated ferrule 3: 0,5 ... 1 mm<sup>2</sup> / 18 AWG;  
Connection type (4): Internal 4;  
Number of connection points: 1;  
Solid conductor 4: 0,5 ... 0,75 mm<sup>2</sup> / 18 AWG;  
Numar total de conexiuni: 25;  
Total number of potentials: 5;  
Numar tipuri de conexiuni: 4;  
Wiring type: Side-entry wiring;  
Ground function: with screw-type ground contact;  
Distana intre pini: 10 mm / 0.394 inch;  
Latime: 50 mm / 1.969 inch;  
Inaltime de la fata: 17 mm / 0.669 inch;  
Adancime: 27,3 mm / 1.075 inch;  
Tip montaj: Snap-in mounting foot;  
Marking: L<sup>ˆ</sup>N<sup>ˆ</sup>-L-PE-N;  
Culoare: white;  
Material group: III a;  
Material izolator: Polycarbonate (PC);  
Flammability class per UL94: V0;  
Clamping spring material: Chrome nickel spring steel (CrNi);  
Contact material: Cupru electrolitic(ECu);  
Contact plating: tin-plated;  
Fire load: 0,302; MJ  
Greutate: 15,9; g  
Temperature stability: 120; °C  
T marking: T85;  
Product Group: 8 (Misc. Chassis Mount Blocks);  
Tip ambalare: bag;  
Tara de origine: PL;  
GTIN: 4050821098614;  
Customs tariff number: 85369010000;  
Pret: 7,94 lei (TVA inclus)

Detalii online: <https://www.materialelectrice.ro/lighting-connector-push-button->

external-with-screw-type-ground-contact-1-n-l-pe-n-5-pole-lighting-side-for-solid-conductors-inst-side-for-all-conductor-types-max-2-5-mm2-surrounding-air-temperature-max-850c-t85-2-50-mm2-white-152145