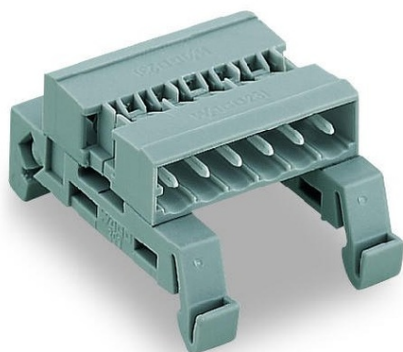


Furnizor: **Sc Trivolt Distribution SRL**
Reg. com.: J23/3300/2016
CIF: RO36421140
Adresa: Strada Apusului nr 3 (primul
sens giratoriu Tehodor Pallady-
Autostrada Soarelui), Catelu, Ilfov
Banca: BRD
IBAN: RO34BRDE441SV13182234410



**WAGO DOUBLE PIN HEADER; DIN-35 RAIL MOUNTING; PIN SPACING
5 MM; 13-POLE; GRAY**

Ratings per: IEC/EN 60664-1;
Ratings (note): Notice: Male connectors must not be live when disconnected!;
Tensiune nominala (III/3): 250; V
Tensiune nominala de supratensiune (III/3): 4; kV
Tensiune nominala (III/2): 320; V
Tensiune nominala de supratensiune (III/2): 4; kV
Tensiune nominala (II/2): 630; V
Tensiune nominala de supratensiune (II/2): 4; kV
Curent nominal: 12; A
Legend (ratings): (III / 2) % Overvoltage category III / Pollution degree 2;
Tensiune nominala UL (Use Group B): 300; V
Curent nominal UL (Use Group B): 15; A
Tensiune nominala UL (Use Group D): 300; V
Curent nominal UL (Use Group D): 10; A
Certificari: UL 1059;
Tensiune nominala UL 1977: 600; V
Curent nominal UL 1977: 15; A
Tensiune nominala CSA (Use Group B): 300; V
Curent nominal CSA (Use Group B): 15; A
Tensiune nominala CSA (Use Group D): 300; V
Curent nominal CSA (Use Group D): 10; A
Numar poli: 13;
Total number of potentials: 13;
Numar tipuri de conexiuni: 1;
Numar nivele: 1;
Distanta intre pini: 5 mm / 0.197 inch;
Latime: 68,2 mm / 2.685 inch;
Inaltime from upper-edge of DIN-rail: 15 mm / 0.591 inch;
Adancime: 42,5 mm / 1.673 inch;
Tip montaj: DIN-35 rail;
Tip contact (pluggable connector): Conector tata/fisa;
Connector (connection type): for pluggable connector;
Mismatching protection: No;
Culoare: gray;
Material group: I;
Material izolator: Polyamide 66 (PA 66);
Flammability class per UL94: V0;
Contact material: Cupru electrolitic(ECu);
Contact plating: tin-plated;
Fire load: 0,285; MJ
Greutate: 13,2; g
Temperatura lucru: -60 ... +100 °C;
Product Group: 3 (Multi Conn. System);
Tip ambalare: BOX;
Tara de origine: DE;
GTIN: 4045454339524;
Customs tariff number: 85366990990;
Pret: 38,40 lei (TVA inclus)

Detalii online: <https://www.materialelectrice.ro/double-pin-header-din-35-rail-mounting-pin-spacing-5-mm-13-pole-gray-152128>