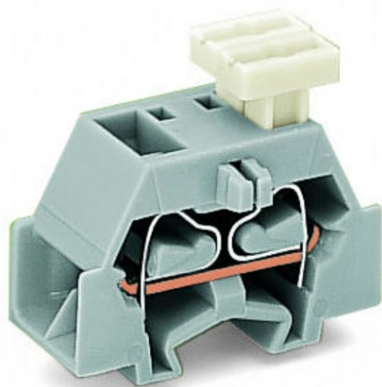


Furnizor: **Sc Trivolt Distribution SRL**  
Reg. com.: J23/3300/2016  
CIF: RO36421140  
Adresa: Strada Apusului nr 3 ( primul  
sens giratoriu Tehodor Pallady-  
Autostrada Soarelui), Catelu, Ilfov  
Banca: BRD  
IBAN: RO34BRDE441SV13182234410



**WAGO 4-CONDUCTOR TERMINAL BLOCK; ON ONE SIDE WITH PUSH-BUTTON; WITH FIXING FLANGE; FOR SCREW OR SIMILAR MOUNTING TYPES; FIXING HOLE 3.2 MM  $\tilde{\sim}$ ; 2.5 MM  $\hat{\wedge}$ ; CAGE CLAMP  $\hat{\wedge}$ ; 2,50 MM  $\hat{\wedge}$ ; ORANGE**

Tensiune nominala (III/3): 500; V  
Tensiune nominala de supratensiune (III/3): 6; kV  
Curent nominal: 24; A  
Legend (ratings): (III / 3)  $\hat{\wedge}$ ™ Overvoltage category III / Pollution degree 3;  
Tehnologie conexiune: CAGE CLAMP  $\hat{\wedge}$ ;  
Tip actionare: Operating tool; Push-button;  
Connectable conductor materials: Copper;  
Solid conductor: 0.08 ... 2.5 mm<sup>2</sup> / 28 ... 14 AWG;  
Fine-stranded conductor: 0.08 ... 2.5 mm<sup>2</sup> / 28 ... 14 AWG;  
Strip length: 8 ... 9 mm / 0.31 ... 0.35 inch;  
Numar poli: 1;  
Numar total de conexiuni: 4;  
Total number of potentials: 1;  
Numar nivele: 1;  
Wiring type: Side-entry wiring;  
Latime: 10 mm / 0.394 inch;  
Inaltime de la fata: 23.2 mm / 0.913 inch;  
Adancime: 28 mm / 1.102 inch;  
Design: horizontal;  
Tip montaj: Mounting flange;  
Marking level: Side marking;  
Culoare: orange;  
Fire load: 0,069; MJ  
Greutate: 4,2; g  
Product Group: 9 (Std. Chassis Mt. Blocks);  
Tip ambalare: BOX;  
Tara de origine: DE;  
GTIN: 4044918613927;  
Customs tariff number: 85369010000;  
Pret: 4,41 lei (TVA inclus)

Detalii online: <https://www.materialelectrice.ro/4-conductor-terminal-block-on-one-side-with-push-button-with-fixing-flange-for-screw-or-similar-mounting-types-fixing-hole-3-2-mm-oe-2-5-mm2-cage-clamp-2-50-mm2-orange-151457>