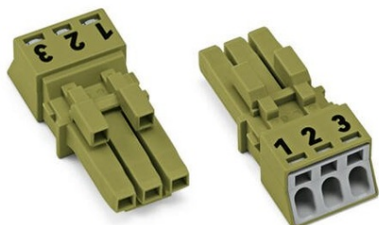


Furnizor: **Sc Trivolt Distribution SRL**
Reg. com.: J23/3300/2016
CIF: RO36421140
Adresa: Strada Apusului nr 3 (primul
sens giratoriu Tehodor Pallady-
Autostrada Soarelui), Catelu, Ilfov
Banca: BRD
IBAN: RO34BRDE441SV13182234410

WAGO SOCKET; 3-POLE; COD. B; 1,50 MM²; LIGHT GREEN



Note on Contact Resistance: approx. 1 mΩ; of contact resistance © approx. 0.25 mΩ;
contact transition plug/socket;
Ratings per: IEC/EN 60664-1;
Tensiune nominala (III/3): 250; V
Tensiune nominala de supratensiune (III/3): 4; kV
Curent nominal: 16; A
Note on Curent nominal: 13 A for 3-pole load;
Legend (ratings): (III / 3) %™ Overvoltage category III / Pollution degree 3;
Tensiune nominala UL 1977: 600; V
Curent nominal UL 1977: 14; A
Tehnologie conexiune: Push-in CAGE CLAMP®;
Tip actionare: Operating tool; Push-in;
Nominal cross-section: 1,5 mm²;
Solid conductor: 0,25 ... 1,5 mm² / 22 ... 16 AWG;
Solid conductor; push-in termination: 0,75 ... 1,5 mm² / 20 ... 16 AWG;
Stranded conductor: 0,25 ... 1 mm² / 22 ... 18 AWG;
Fine-stranded conductor: 0,25 ... 1,5 mm² / 22 ... 16 AWG;
Fine-stranded conductor; with insulated ferrule: 0,25 ... 0,75 mm² / 22 ... 20 AWG;
Fine-stranded conductor; with uninsulated ferrule: 0,25 ... 0,75 mm² / 22 ... 20 AWG;
Fine-stranded conductor; with ferrule; push-in termination: 0,75 mm² / 20 AWG;
Strip length: 9 mm / 0.35 inch;
Note (strip length): see also packaging or instructions;
Numar poli: 3;
Numar total de conexiuni: 3;
Total number of potentials: 3;
Conductor entry direction to mating direction: 0; °
Distanta intre pini: 4,4 mm / 0.173 inch;
Latime: 15 mm / 0.591 inch;
Inaltime: 11,7 mm / 0.461 inch;
Adancime: 34,1 mm / 1.343 inch;
Coding: B;
Mating force of a plug-in connection: approx. 20 ... 70 N (depending on pole number);
Retention force of a plug-in connection: Locked: > 80 N;
Unmating force of a plug-in connection: Unlocked: approx. 20 ... 70 N (depending on pole number);
Number of mating cycles: >200, without resistive load 100, with resistive load IN = 16 A, tested (1.5 mm²/16 AWG);
Marking: 1 2;
Protection type: IP20;
Note on protection type: IP40 with strain relief housing;
Potential marking: 1 2;
Tip contact (pluggable connector): Conector mama/priza;
Connector (connection type): for conductor;
Mismating protection: Yes;
Locking of plug-in connection: locking lever;
Locking lever: retrofittable;
Culoare: light green;
Material izolator: Polyamide 66 (PA 66);
Clamping spring material: Chrome nickel spring steel (CrNi);
Contact material: Copper or copper alloy (surface-treated);
Fire load: 0,07; MJ
Greutate: 3,6; g
Processing temperature: -5 ... +40 °C;
Continuous operating temperature: -35 ... +85 °C;
Note on continuous operating temperature: Insulating parts for temperatures ≤ 105 °C;
Tip ambalare: BOX;
Tara de origine: PL;
GTIN: 4055143499934;
Customs tariff number: 85366990990;
Pret: 13,14 lei (TVA inclus)

Detalii online: <https://www.materialelectrice.ro/socket-3-pole-cod-b-1-50-mm2-light-green-151412>