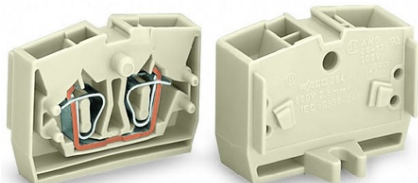


Furnizor: **Sc Trivolt Distribution SRL**
Reg. com.: J23/3300/2016
CIF: RO36421140
Adresa: Strada Apusului nr 3 (primul
sens giratoriu Tehodor Pallady-
Autostrada Soarelui), Catelu, Ilfov
Banca: BRD
IBAN: RO34BRDE441SV13182234410



**WAGO 2-CONDUCTOR END TERMINAL BLOCK; SUITABLE FOR EX E
II APPLICATIONS; WITHOUT PUSH-BUTTONS; WITH FIXING
FLANGE; FOR SCREW OR SIMILAR MOUNTING TYPES; FIXING HOLE
3.2 MM $\tilde{\sim}$; 2.5 MM \hat{A} ²; CAGE CLAMP \hat{A} [®]; 2.50 MM \hat{A} ²; LIGHT GRAY**

Tensiune nominala EN (Ex e II): 690; V
Curent nominal (Ex e II): 23; A
Tehnologie conexiune: CAGE CLAMP \hat{A} [®];
Tip actionare: Operating tool;
Connectable conductor materials: Copper;
Solid conductor: 0,08 ... 2,5 mm² / 28 ... 12 AWG;
Fine-stranded conductor: 0,08 ... 2,5 mm² / 28 ... 12 AWG;
Strip length: 8 ... 9 mm / 0.31 ... 0.35 inch;
Numar total de conexiuni: 2;
Total number of potentials: 1;
Numar nivele: 1;
Wiring type: Front-entry wiring;
Note (conductor cross-section): 12 AWG: THHN, THWN;
Latime: 6 mm / 0.236 inch;
Inaltime de la fata: 22,1 mm / 0.87 inch;
Adancime: 32 mm / 1.26 inch;
Design: horizontal;
Tip montaj: Mounting flange;
Marking level: Center marking;
Culoare: light gray;
Fire load: 0,076; MJ
Greutate: 3,9; g
Product Group: 9 (Std. Chassis Mt. Blocks);
Tip ambalare: BOX;
Tara de origine: CH;
GTIN: 4044918415057;
Customs tariff number: 85369010000;
Pret: 4,41 lei (TVA inclus)

Detalii online: <https://www.materialelectrice.ro/2-conductor-end-terminal-block-suitable-for-ex-e-ii-applications-without-push-buttons-with-fixing-flange-for-screw-or-similar-mounting-types-fixing-hole-3-2-mm-oe-2-5-mm2-cage-clamp-2-50-mm2-light-gray-150766>