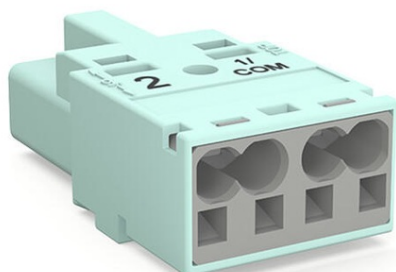


Furnizor: **Sc Trivolt Distribution SRL**
Reg. com.: J23/3300/2016
CIF: RO36421140
Adresa: Strada Apusului nr 3 (primul
sens giratoriu Tehodor Pallady-
Autostrada Soarelui), Catelu, Ilfov
Banca: BRD
IBAN: RO34BRDE441SV13182234410



WAGO PLUG; 2-POLE; COD. B; 4,00 MM²; LIGHT TURQUOISE

Note on Contact Resistance: approx. 1 mΩ; of contact resistance © approx. 0.25 mΩ; contact transition plug/socket;
Ratings per: IEC/EN 60664-1;
Tensiune nominala (III/3): 250; V
Tensiune nominala de supratensiune (III/3): 4; kV
Curent nominal: 25; A
Legend (ratings): (III / 3) %™ Overvoltage category III / Pollution degree 3;
Tensiune nominala UL 1977: 600; V
Curent nominal UL 1977: 23; A
Tehnologie conexiune: Push-in CAGE CLAMP®;
Tip actionare: Operating tool; Push-in;
Nominal cross-section: 4 mm²;
Solid conductor: 0,5 ... 4 mm² / 20 ... 12 AWG;
Solid conductor; push-in termination: 1,5 ... 4 mm² / 16 ... 12 AWG;
Stranded conductor: 0,5 ... 2,5 mm² / 20 ... 14 AWG;
Fine-stranded conductor: 0,5 ... 4 mm² / 20 ... 12 AWG;
Fine-stranded conductor; with insulated ferrule: 0,25 ... 1,5 mm² / 20 ... 16 AWG;
Fine-stranded conductor; with uninsulated ferrule: 0,25 ... 2,5 mm² / 20 ... 14 AWG;
Fine-stranded conductor; with ferrule; push-in termination: 1,5 mm² / 16 AWG;
Strip length: 9 mm / 0.35 inch;
Note (strip length): see also packaging or instructions;
Numar poli: 2;
Numar total de conexiuni: 4;
Total number of potentials: 2;
Conductor entry direction to mating direction: 0; °
Distanta intre pini: 10 mm / 0.394 inch;
Latime: 20 mm / 0.787 inch;
Inaltime: 12,9 mm / 0.508 inch;
Adancime: 37,5 mm / 1.476 inch;
Coding: B;
Mating force of a plug-in connection: approx. 20 ... 70 N (depending on pole number);
Retention force of a plug-in connection: Locked: > 80 N;
Unmating force of a plug-in connection: Unlocked: approx. 20 ... 70 N (depending on pole number);
Number of mating cycles: >200, without resistive load 100, with resistive load IN = 25 A, tested (4 mm²/AWG 12);
Marking: 1/COM 2;
Protection type: IP20;
Note on protection type: In mated condition with strain relief housing: IP2xC (These compact connectors are not designed for use in open, easily accessible areas.);
Tip contact (pluggable connector): Conector tata/fisa;
Connector (connection type): for conductor;
Mismating protection: Yes;
Locking of plug-in connection: locking lever;
Locking lever: retrofittable;
Culoare: light turquoise;
Material izolator: Polyamide 66 (PA 66);
Clamping spring material: Chrome nickel spring steel (CrNi);
Contact material: Copper or copper alloy (surface-treated);
Greutate: 6,5; g
Processing temperature: -5 ... +40 °C;
Continuous operating temperature: -35 ... +85 °C;
Note on continuous operating temperature: Insulating parts for temperatures ≤ 105 °C;
Tip ambalare: BOX;
Tara de origine: DE;
GTIN: 4055143766753;
Customs tariff number: 85366990990;
Pret: 11,88 lei (TVA inclus)

Detalii online: <https://www.materialelectrice.ro/plug-2-pole-cod-b-4-00-mm2-light-turquoise-150643>