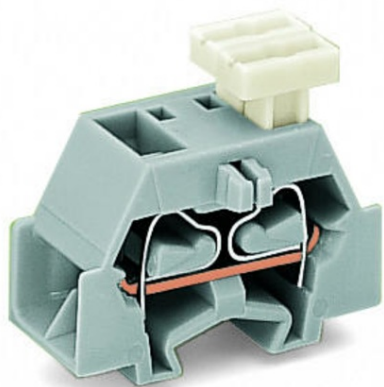


Furnizor: **Sc Trivolt Distribution SRL**
Reg. com.: J23/3300/2016
CIF: RO36421140
Adresa: Strada Apusului nr 3 (primul
sens giratoriu Tehodor Pallady-
Autostrada Soarelui), Catelu, Ilfov
Banca: BRD
IBAN: RO34BRDE441SV13182234410



WAGO 4-CONDUCTOR TERMINAL BLOCK; SUITABLE FOR EX I APPLICATIONS; ON ONE SIDE WITH PUSH-BUTTON; WITH SNAP-IN MOUNTING FOOT; FOR PLATE THICKNESS 0.6 - 1.2 MM; FIXING HOLE 3.5 MM Å; 2.5 MMÅ²; CAGE CLAMPÅ; 2,50 MMÅ²; BLUE

Tensiune nominala (III/3): 500; V
Tensiune nominala de supratensiune (III/3): 6; kV
Curent nominal: 24; A
Legend (ratings): (III / 3) Å%™ Overvoltage category III / Pollution degree 3;
Tehnologie conexiune: CAGE CLAMPÅ;
Tip actionare: Operating tool; Push-button;
Connectable conductor materials: Copper;
Solid conductor: 0.08 ... 2.5 mm² / 28 ... 14 AWG;
Fine-stranded conductor: 0.08 ... 2.5 mm² / 28 ... 14 AWG;
Strip length: 8 ... 9 mm / 0.31 ... 0.35 inch;
Numar poli: 1;
Numar total de conexiuni: 4;
Total number of potentials: 1;
Numar nivele: 1;
Wiring type: Side-entry wiring;
Latime: 10 mm / 0.394 inch;
Inaltime de la fata: 23.2 mm / 0.913 inch;
Adancime: 28 mm / 1.102 inch;
Design: horizontal;
Tip montaj: Snap-in mounting foot;
Marking level: Side marking;
Culoare: blue;
Fire load: 0,07; MJ
Greutate: 4,1; g
Tip ambalare: BOX;
Tara de origine: DE;
GTIN: 4044918615068;
Customs tariff number: 85369010000;
Pret: 4,84 lei (TVA inclus)

Detalii online: <https://www.materialelectrice.ro/4-conductor-terminal-block-suitable-for-ex-i-applications-on-one-side-with-push-button-with-snap-in-mounting-foot-for-plate-thickness-0-6-1-2-mm-fixing-hole-3-5-mm-oe-2-5-mm2-cage-clamp-2-50-mm2-blue-150494>