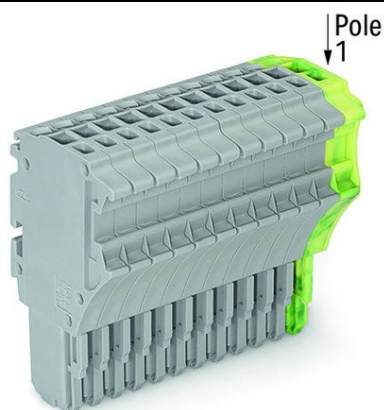


Furnizor: **Sc Trivolt Distribution SRL**
Reg. com.: J23/3300/2016
CIF: RO36421140
Adresa: Strada Apusului nr 3 (primul
sens giratoriu Tehodor Pallady-
Autostrada Soarelui), Catelu, Ilfov
Banca: BRD
IBAN: RO34BRDE441SV13182234410



**WAGO 1-CONDUCTOR FEMALE PLUG; 1.5 MM²; 15-POLE; 1.50
MM²; GRAY, GREEN-YELLOW**

Ratings per: IEC/EN 61984;
Tensiune nominala (III/3): 500; V
Tensiune nominala de supratensiune (III/3): 6; kV
Curent nominal: 13,5; A
Legend (ratings): (III / 3) $\hat{\%}$ ™ Overvoltage category III / Pollution degree 3;
Tensiune nominala UL (Use Group B): 300; V
Curent nominal UL (Use Group B): 15; A
Tensiune nominala UL (Use Group C): 300; V
Curent nominal UL (Use Group C): 15; A
Tensiune nominala UL (Use Group D): 300; V
Curent nominal UL (Use Group D): 15; A
Certificari: UL 1059;
Tehnologie conexiune: Push-in CAGE CLAMP®;
Tip actionare: Open Tool Slot; Push-in;
Connectable conductor materials: Copper;
Nominal cross-section: 1 mm²;
Solid conductor: 0.14 ... 1.5 mm² / 24 ... 16 AWG;
Solid conductor; push-in termination: 0.5 ... 1.5 mm² / 20 ... 16 AWG;
Fine-stranded conductor: 0.14 ... 1.5 mm² / 24 ... 16 AWG;
Fine-stranded conductor; with insulated ferrule: 0.5 ... 0.75 mm² / 20 ... 18 AWG;
Fine-stranded conductor; with ferrule; push-in termination: 0.5 ... 0.75 mm² / 20 ... 18
AWG;
Strip length: 9 ... 11 mm / 0.35 ... 0.43 inch;
Numar poli: 15;
Numar total de conexiuni: 15;
Total number of potentials: 15;
Wiring type: Front-entry wiring;
Note (conductor cross-section): Depending on the conductor characteristic, a conductor
with a smaller cross section can also be inserted via push-in termination.;
Latime: 53.2 mm / 2.094 inch;
Inaltime: 40.5 mm / 1.594 inch;
Adancime: 22.4 mm / 0.882 inch;
Module Latime: 3.5 mm / 0.138 inch;
Marking level: Side marking;
Tip contact (pluggable connector): Conector mama/priza;
Connector (connection type): for conductors;
Culoare: gray, green-yellow;
Material izolator: Polyamide 66 (PA 66);
Fire load: 0,602; MJ
Greutate: 33,9; g
Product Group: 18 (X-COM-System);
Tip ambalare: BOX;
Tara de origine: DE;
GTIN: 4050821026938;
Customs tariff number: 85366990990;
Pret: 65,03 lei (TVA inclus)

Detalii online: <https://www.materialelectrice.ro/1-conductor-female-plug-1-5-mm2-15-pole-1-50-mm2-gray-green-yellow-150217>