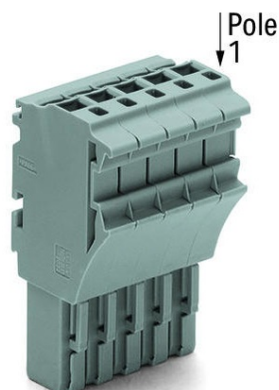


Furnizor: **Sc Trivolt Distribution SRL**
Reg. com.: J23/3300/2016
CIF: RO36421140
Adresa: Strada Apusului nr 3 (primul
sens giratoriu Tehodor Pallady-
Autostrada Soarelui), Catelu, Ilfov
Banca: BRD
IBAN: RO34BRDE441SV13182234410



WAGO 1-CONDUCTOR FEMALE PLUG; 2.5 MM²; 13-POLE; 2.50 MM²; ORANGE

Ratings per: IEC/EN 61984;
Tesiune nominala (III/3): 690; V
Tensiune nominala de supratensiune (III/3): 6; kV
Curent nominal: 24; A
Curent nominal 2: 32; A
Legend (ratings): (III / 3) \hat{a} %^o™ Overvoltage category III / Pollution degree 3;
Tehnologie conexiune: Push-in CAGE CLAMP®;
Tip actionare: Open Tool Slot; Push-in;
Connectable conductor materials: Copper;
Nominal cross-section: 2.5 mm²;
Solid conductor: 0.25 ... 4 mm² / 22 ... 12 AWG;
Solid conductor; push-in termination: 0.75 ... 4 mm² / 18 ... 12 AWG;
Fine-stranded conductor: 0.25 ... 4 mm² / 22 ... 12 AWG;
Fine-stranded conductor; with insulated ferrule: 1 ... 2.5 mm² / 18 ... 12 AWG;
Fine-stranded conductor; with ferrule; push-in termination: 1 ... 2.5 mm² / 18 ... 12 AWG;
Strip length: 10 ... 12 mm / 0.39 ... 0.47 inch;
Numar poli: 13;
Numar total de conexiuni: 13;
Total number of potentials: 13;
Wiring type: Front-entry wiring;
Note (conductor cross-section): Depending on the conductor characteristic, a conductor with a smaller cross section can also be inserted via push-in termination.;
Latime: 67.6 mm / 2.661 inch;
Inaltime: 40.5 mm / 1.594 inch;
Adancime: 22.4 mm / 0.882 inch;
Module Latime: 5.2 mm / 0.205 inch;
Marking level: Side marking;
Tip contact (pluggable connector): Conector mama/priza;
Connector (connection type): for conductors;
Culoare: orange;
Material izolator: Polyamide 66 (PA 66);
Fire load: 0,696; MJ
Greutate: 42,7; g
Product Group: 18 (X-COM-System);
Tip ambalare: BOX;
Tara de origine: DE;
GTIN: 4045454971151;
Customs tariff number: 85366990990;
Pret: 64,34 lei (TVA inclus)

Detalii online: <https://www.materialelectrice.ro/1-conductor-female-plug-2-5-mm2-13-pole-2-50-mm2-orange-150091>