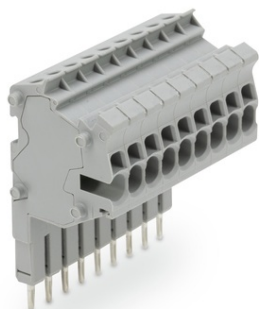


Furnizor: **Sc Trivolt Distribution SRL**
Reg. com.: J23/3300/2016
CIF: RO36421140
Adresa: Strada Apusului nr 3 (primul
sens giratoriu Tehodor Pallady-
Autostrada Soarelui), Catelu, Ilfov
Banca: BRD
IBAN: RO34BRDE441SV13182234410



**WAGO MODULAR TOPJOBÂ®S CONNECTOR; MODULAR; FOR
JUMPER CONTACT SLOT; 9-POLE; 1,50 MMÂ²; GRAY**

Tensiune nominala (III/3): 500; V
Tensiune nominala de supratensiune (III/3): 6; kV
Curent nominal: 18; A
Legend (ratings): (III / 3) %™ Overvoltage category III / Pollution degree 3;
Tehnologie conexiune: Push-in CAGE CLAMP®;
Tip actionare: Open Tool Slot;
Nominal cross-section: 1.5 mm²;
Solid conductor: 0.25 ... 2.5 mm² / 22 ... 14 AWG;
Solid conductor; push-in termination: 0.75 ... 2.5 mm² / 18 ... 14 AWG;
Fine-stranded conductor: 0.25 ... 2.5 mm² / 22 ... 14 AWG;
Fine-stranded conductor; with insulated ferrule: 0.75 ... 1.5 mm² / 18 ... 16 AWG;
Fine-stranded conductor; with ferrule; push-in termination: 0.75 ... 1.5 mm² / 18 ... 16 AWG;
Strip length: 9 ... 11 mm / 0.35 ... 0.43 inch;
Numar poli: 9;
Numar total de conexiuni: 9;
Total number of potentials: 9;
Wiring type: Side-entry wiring;
Note (conductor cross-section): Depending on the conductor characteristic, a conductor with a smaller cross section can also be inserted via push-in termination.;
Latime: 37.8 mm / 1.488 inch;
Module Latime: 4.2 mm / 0.165 inch;
Marking level: Center/side marking;
Culoare: gray;
Material izolator: Polyamide 66 (PA 66);
Fire load: 0,63; MJ
Greutate: 19,4; g
Product Group: 22 (TOPJOB S);
Tip ambalare: BOX;
Tara de origine: DE;
GTIN: 4045454178314;
Customs tariff number: 85366990990;
Pret: 97,44 lei (TVA inclus)

Detalii online: <https://www.materialelectrice.ro/modular-topjob-s-connector-modular-for-jumper-contact-slot-9-pole-1-50-mm2-gray-148884>