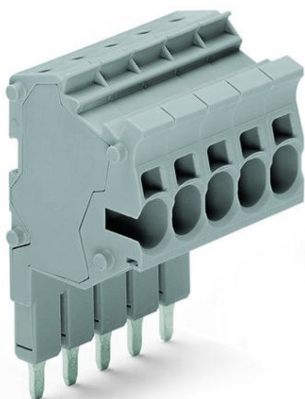


Furnizor: **Sc Trivolt Distribution SRL**
Reg. com.: J23/3300/2016
CIF: RO36421140
Adresa: Strada Apusului nr 3 (primul
sens giratoriu Tehodor Pallady-
Autostrada Soarelui), Catelu, Ilfov
Banca: BRD
IBAN: RO34BRDE441SV13182234410



**WAGO MODULAR TOPJOB[®]S CONNECTOR; MODULAR; FOR
JUMPER CONTACT SLOT; 4-POLE; 4,00 MM²; GRAY**

Tensiune nominala (III/3): 500; V
Tensiune nominala de supratensiune (III/3): 6; kV
Curent nominal: 32; A
Legend (ratings): (III / 3) ^{â%}™ Overvoltage category III / Pollution degree 3;
Tehnologie conexiune: Push-in CAGE CLAMP[®];
Tip actionare: Open Tool Slot;
Nominal cross-section: 4 mm²;
Solid conductor: 0,5 ... 6 mm² / 20 ... 10 AWG;
Solid conductor; push-in termination: 1,5 ... 6 mm² / 14 ... 10 AWG;
Fine-stranded conductor: 0,5 ... 6 mm² / 20 ... 10 AWG;
Fine-stranded conductor; with insulated ferrule: 1,5 ... 4 mm² / 18 ... 12 AWG;
Fine-stranded conductor; with ferrule; push-in termination: 1,5 ... 4 mm² / 18 ... 12 AWG;
Strip length: 11 ... 13 mm / 0.43 ... 0.51 inch;
Numar poli: 4;
Numar total de conexiuni: 4;
Total number of potentials: 4;
Wiring type: Side-entry wiring;
Note (conductor cross-section): Depending on the conductor characteristic, a conductor with a smaller cross-section can also be inserted via push-in termination.;
Latime: 24,8 mm / 0.976 inch;
Module Latime: 6,2 mm / 0.244 inch;
Marking level: Center/side marking;
Culoare: gray;
Material izolator: Polyamide 66 (PA 66);
Fire load: 0,284; MJ
Greutate: 18; g
Product Group: 22 (TOPJOB S);
Tip ambalare: BOX;
Tara de origine: DE;
GTIN: 4045454178444;
Customs tariff number: 85366990990;
Pret: 44,83 lei (TVA inclus)

Detalii online: <https://www.materialelectrice.ro/modular-topjob-s-connector-modular-for-jumper-contact-slot-4-pole-4-00-mm2-gray-145304>