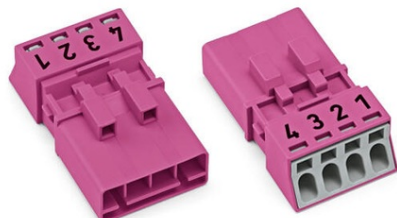


Furnizor: **Sc Trivolt Distribution SRL**
Reg. com.: J23/3300/2016
CIF: RO36421140
Adresa: Strada Apusului nr 3 (primul
sens giratoriu Tehodor Pallady-
Autostrada Soarelui), Catelu, Ilfov
Banca: BRD
IBAN: RO34BRDE441SV13182234410

WAGO PLUG; 4-POLE; 1,50 MM²; PINK



Note on Contact Resistance: approx. 1 mΩ; of contact resistance © approx. 0.25 mΩ;
contact transition plug/socket;
Ratings per: IEC/EN 60664-1;
Tensiune nominala (III/3): 400; V
Tensiune nominala de supratensiune (III/3): 6; kV
Curent nominal: 16; A
Note on Curent nominal: 13 A for 3-pole load 10 A for 4-pole load;
Legend (ratings): (III / 3) %™ Overvoltage category III / Pollution degree 3;
Tensiune nominala UL 1977: 600; V
Curent nominal UL 1977: 12; A
Tehnologie conexiune: Push-in CAGE CLAMP®;
Tip actionare: Operating tool; Push-in;
Nominal cross-section: 1,5 mm²;
Solid conductor: 0,25 ... 1,5 mm² / 22 ... 16 AWG;
Solid conductor; push-in termination: 0,75 ... 1,5 mm² / 20 ... 16 AWG;
Stranded conductor: 0,25 ... 1 mm² / 22 ... 18 AWG;
Fine-stranded conductor: 0,25 ... 1,5 mm² / 22 ... 16 AWG;
Fine-stranded conductor; with insulated ferrule: 0,25 ... 0,75 mm² / 22 ... 20 AWG;
Fine-stranded conductor; with uninsulated ferrule: 0,25 ... 0,75 mm² / 22 ... 20 AWG;
Fine-stranded conductor; with ferrule; push-in termination: 0,75 mm² / 20 AWG;
Strip length: 9 mm / 0.35 inch;
Note (strip length): see also packaging or instructions;
Numar poli: 4;
Numar total de conexiuni: 4;
Total number of potentials: 4;
Conductor entry direction to mating direction: 0; °
Distanta intre pini: 4,4 mm / 0.173 inch;
Latime: 19,2 mm / 0.756 inch;
Inaltime: 11,7 mm / 0.461 inch;
Adancime: 34,1 mm / 1.343 inch;
Coding: B;
Mating force of a plug-in connection: approx. 20 ... 70 N (depending on pole number);
Retention force of a plug-in connection: Locked: > 80 N;
Unmating force of a plug-in connection: Unlocked: approx. 20 ... 70 N (depending on pole number);
Number of mating cycles: >200, without resistive load 100, with resistive load IN = 16 A, tested (1.5 mm²/16 AWG);
Marking: 1 2 3 4;
Protection type: IP20;
Note on protection type: IP40 when mated with strain relief housing;
Potential marking: 1 2 3 4;
Tip contact (pluggable connector): Conector tata/fisa;
Connector (connection type): for conductor;
Mismating protection: Yes;
Locking of plug-in connection: locking lever;
Locking lever: retrofittable;
Culoare: pink;
Material izolator: Polyamide 66 (PA 66);
Clamping spring material: Chrome nickel spring steel (CrNi);
Contact material: Copper or copper alloy (surface-treated);
Fire load: 0,099; MJ
Greutate: 4,5; g
Processing temperature: -5 ... +40 °C;
Continuous operating temperature: -35 ... +85 °C;
Note on continuous operating temperature: Insulating parts for temperatures ≤ 105 °C;
Product Group: 20 (WINSTA);
Tip ambalare: BOX;
Tara de origine: PL;
GTIN: 4055143523608;
Customs tariff number: 85366990990;
Pret: 16,18 lei (TVA inclus)

Detalii online: <https://www.materialeelectrice.ro/plug-4-pole-1-50-mm2-pink-144223>