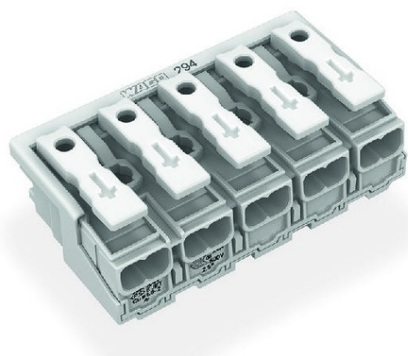


Furnizor: **Sc Trivolt Distribution SRL**
Reg. com.: J23/3300/2016
CIF: RO36421140
Adresa: Strada Apusului nr 3 (primul
sens giratoriu Tehodor Pallady-
Autostrada Soarelui), Catelu, Ilfov
Banca: BRD
IBAN: RO34BRDE441SV13182234410



**WAGO LIGHTING CONNECTOR; PUSH-BUTTON, EXTERNAL;
WITHOUT GROUND CONTACT; 5-POLE; LIGHTING SIDE: FOR SOLID
CONDUCTORS; INST. SIDE: FOR ALL CONDUCTOR TYPES; MAX. 2.5
MM²; SURROUNDING AIR TEMPERATURE: MAX 85^oC (T85); 2,50
MM²; WHITE**

Ratings per: IEC/EN 60998-1;
Ratings (note): Connection points;
Tensiune nominala (II/2): 500; V
Tensiune nominala de supratensiune (II/2): 4; kV
Curent nominal: 24; A
Ratings per: IEC/EN 60998-2-2;
Ratings (note) 2: Connection points;
Tensiune nominala (II/2) 2: 500; V
Tensiune nominala de supratensiune (II/2) 2: 4; kV
Curent nominal 2: 24; A
Curent nominal 3: 16; A
Legend (ratings): (II / 2) $\hat{\%}$ ™ Overvoltage category II / Pollution degree 2;
Connection type (1): External 1;
Tehnologie conexiune: Push-in CAGE CLAMP®;
Number of connection points (connection type): 2;
Tip actionare: Operating tool; Push-button;
Connectable conductor materials: Copper;
Solid conductor: 0,5 ... 2,5 mm² / 18 ... 12 AWG;
Solid conductor; push-in termination: 0,5 ... 2,5 mm² / 18 ... 12 AWG;
Stranded conductor: 0,5 ... 2,5 mm² / 18 ... 14 AWG;
Fine-stranded conductor: 0,5 ... 2,5 mm² / 18 ... 14 AWG;
Fine-stranded conductor; with insulated ferrule: 0,5 ... 1,5 mm² / 18 ... 16 AWG;
Fine-stranded conductor; with uninsulated ferrule: 0,5 ... 1,5 mm² / 18 ... 16 AWG;
Fine-stranded conductor; with ferrule; push-in termination: 0,5 mm² / 18 AWG;
Strip length: 8 ... 9 mm / 0.31 ... 0.35 inch;
Numar poli: 5;
Connection type 2: Internal 2;
Tehnologie conexiune 2: PUSH WIRE®;
Number of connection points: 1;
Solid conductor 2: 0,5 ... 2,5 mm² / 18 ... 14 AWG;
Fine-stranded conductor; with insulated ferrule 2: 0,5 ... 1 mm² / 18 ... 16 AWG;
Fine-stranded conductor; with uninsulated ferrule 2: 0,5 ... 1,5 mm² / 18 ... 14 AWG;
Strip length 2: 8 ... 9 mm / 0.31 ... 0.35 inch;
Connection type (3): Internal 3;
Number of connection points: 1;
Solid conductor 3: 0,5 ... 1,5 mm² / 18 ... 16 AWG;
Fine-stranded conductor; with insulated ferrule 3: 0,5 ... 0,75 mm² / 18 AWG 0.5 ...
0.75mm² / 18 AWG;
Fine-stranded conductor; with uninsulated ferrule 3: 0,5 ... 1 mm² / 18 AWG;
Connection type (4): Internal 4;
Number of connection points: 1;
Solid conductor 4: 0,5 ... 0,75 mm² / 18 AWG;
Numar total de conexiuni: 25;
Total number of potentials: 5;
Numar tipuri de conexiuni: 4;
Wiring type: Side-entry wiring;
Distanta intre pini: 10 mm / 0.394 inch;
Latime: 50 mm / 1.969 inch;
Inaltime de la fata: 17 mm / 0.669 inch;
Adancime: 27,3 mm / 1.075 inch;
Marking: plain;
Culoare: white;
Material group: III a;
Material izolator: Polycarbonate (PC);
Flammability class per UL94: V0;
Clamping spring material: Chrome nickel spring steel (CrNi);
Contact material: Cupru electrolitic (ECu);
Contact plating: tin-plated;
Fire load: 0,301; MJ
Greutate: 15,2; g
Temperature stability: 120; °C
T marking: T85;
Product Group: 8 (Misc. Chassis Mount Blocks);
Tip ambalare: lamination;
Tara de origine: CH;
GTIN: 4050821097624;
Customs tariff number: 85369010000;
Pret: 7,28 lei (TVA inclus)

Detalii online: <https://www.materialelectrice.ro/lighting-connector-push-button-external-without-ground-contact-5-pole-lighting-side-for-solid-conductors-inst-side-for-all-conductor-types-max-2-5-mm2-surrounding-air-temperature-max-850c-t85-2-50-mm2->

