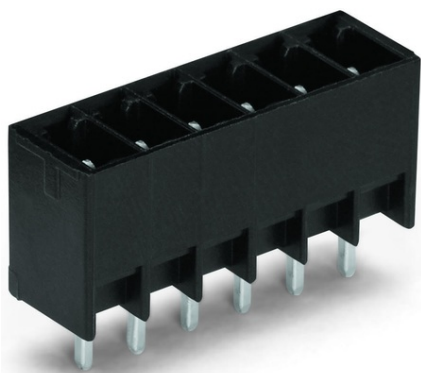


Furnizor: **Sc Trivolt Distribution SRL**
Reg. com.: J23/3300/2016
CIF: RO36421140
Adresa: Strada Apusului nr 3 (primul
sens giratoriu Tehodor Pallady-
Autostrada Soarelui), Catelu, Ilfov
Banca: BRD
IBAN: RO34BRDE441SV13182234410



**WAGO THT MALE HEADER; 0.8 X 0.8 MM SOLDER PIN; STRAIGHT;
PIN SPACING 3.5 MM; 8-POLE; BLACK**

Ratings per: IEC/EN 60664-1;
Tensiune nominala (III/3): 160; V
Tensiune nominala de supratensiune (III/3): 2,5; kV
Tensiune nominala (III/2): 160; V
Tensiune nominala de supratensiune (III/2): 2,5; kV
Tensiune nominala (II/2): 320; V
Tensiune nominala de supratensiune (II/2): 2,5; kV
Curent nominal: 8; A
Legend (ratings): (III / 2) \hat{a} %™ Overvoltage category III / Pollution degree 2;
Tensiune nominala UL (Use Group B): 150; V
Curent nominal UL (Use Group B): 8; A
Certificari: UL 1059;
Numar poli: 8;
Total number of potentials: 8;
Numar tipuri de conexiuni: 1;
Numar nivele: 1;
Distanta intre pini: 3.5 mm / 0.138 inch;
Latime: 29.4 mm / 1.157 inch;
Inaltime: 13.1 mm / 0.516 inch;
Inaltime de la fata: 9.7 mm / 0.382 inch;
Adancime: 6.9 mm / 0.272 inch;
Lungimea pinului de contact: 3,4; mm
Solder pin dimensions: 0.8 x 0.8 mm;
Diametrul de gaurire cu toleranta: 1.2 (+0.1) mm;
Tip contact (pluggable connector): Conector tata/fisa;
Connector (connection type): for PCBs;
Mismatching protection: No;
Mating direction to the PCB: 90; °
PCB contact: THT;
Solder pin arrangement: over the entire male connector, in line;
Number of solder pins per potential: 1;
Culoare: black;
Material group: I;
Material izolator: Polyphthalamide (PPA GF);
Flammability class per UL94: V0;
Contact material: Cupru electrolitic(ECu);
Contact plating: tin-plated;
Fire load: 0,036; MJ
Greutate: 1,8; g
Temperatura lucru: -60 ... +100 °C;
Product Group: 3 (Multi Conn. System);
Tip ambalare: BOX;
Tara de origine: DE;
GTIN: 4045454858872;
Customs tariff number: 85366990990;
Pret: 12,12 lei (TVA inclus)

Detalii online: <https://www.materialelectrice.ro/tht-male-header-0-8-x-0-8-mm-solder-pin-straight-pin-spacing-3-5-mm-8-pole-black-143854>