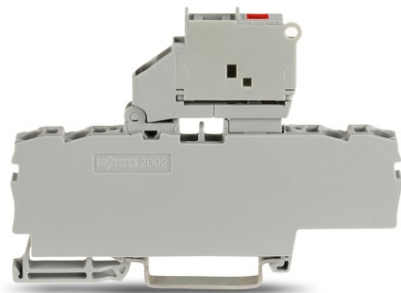


Furnizor: **Sc Trivolt Distribution SRL**
Reg. com.: J23/3300/2016
CIF: RO36421140
Adresa: Strada Apusului nr 3 (primul
sens giratoriu Tehodor Pallady-
Autostrada Soarelui), Catelu, Ilfov
Banca: BRD
IBAN: RO34BRDE441SV13182234410



WAGO 4-CONDUCTOR FUSE TERMINAL BLOCK; WITH PIVOTING FUSE HOLDER; WITH END PLATE; FOR 5 X 20 MM MINIATURE METRIC FUSE; WITH BLOWN FUSE INDICATION BY LED; 12 - 30 V; FOR DIN-RAIL 35 X 15 AND 35 X 7.5; 2.5 MM²; PUSH-IN CAGE CLAMP®; 2,50 MM²; GRAY

Ratings per: IEC/EN 60947-7-3;
Tensiune nominala (III/3): 250; V
Tensiune nominala de supratensiune (III/3): 6; kV
Curent nominal: 6,3; A
Operation status indicator: 12 ... 30 V;
Legend (ratings): (III / 3) %TM Overvoltage category III / Pollution degree 3;
Tensiune nominala UL (Use Group B): 30; V
Curent nominal UL (Use Group B): 6,3; A
Tensiune nominala UL (Use Group C): 30; V
Curent nominal UL (Use Group C): 6,3; A
Tensiune nominala UL (Use Group D): 30; V
Curent nominal UL (Use Group D): 6,3; A
Certificari: UL 1059;
Tehnologie conexiune: Push-in CAGE CLAMP®;
Tip actionare: Push-in; Open Tool Slot;
Connectable conductor materials: Copper;
Nominal cross-section: 2,5 mm²;
Solid conductor: 0,25 ... 4 mm² / 22 ... 12 AWG;
Solid conductor; push-in termination: 0,75 ... 4 mm² / 18 ... 12 AWG;
Fine-stranded conductor: 0,25 ... 4 mm² / 22 ... 12 AWG;
Fine-stranded conductor; with insulated ferrule: 1 ... 2,5 mm² / 18 ... 12 AWG;
Fine-stranded conductor; with ferrule; push-in termination: 1 ... 2,5 mm² / 18 ... 12 AWG;
Strip length: 10 ... 12 mm / 0.39 ... 0.47 inch;
Numar total de conexiuni: 4;
Total number of potentials: 1;
Numar nivele: 1;
Wiring type: Front-entry wiring;
Note (conductor cross-section): Depending on the conductor characteristic, a conductor with a smaller cross-section can also be inserted via push-in termination.;
Number of jumper slots: 2;
Latime: 6,2 mm / 0.244 inch;
Inaltime from upper-edge of DIN-rail: 57,2 mm / 2.252 inch;
Adancime: 87,5 mm / 3.445 inch;
Design: horizontal type;
Tip montaj: DIN-35 rail;
Marking level: Center/side marking;
Culoare: gray;
Material izolator: Polyamide 66 (PA 66);
Greutate: 16,6; g
Product Group: 22 (TOPJOB S);
Tip ambalare: BOX;
Tara de origine: CN;
GTIN: 4045454790073;
Customs tariff number: 85369095990;
Pret: 75,65 lei (TVA inclus)

Detalii online: <https://www.materialelectrice.ro/4-conductor-fuse-terminal-block-with-pivoting-fuse-holder-with-end-plate-for-5-x-20-mm-miniature-metric-fuse-with-blown-fuse-indication-by-led-12-30-v-for-din-rail-35-x-15-and-35-x-7-5-2-5-mm2-push-in-cage-clamp-2-50-mm2-gray-140588>