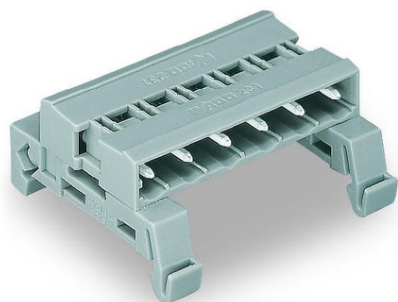


Furnizor: **Sc Trivolt Distribution SRL**
Reg. com.: J23/3300/2016
CIF: RO36421140
Adresa: Strada Apusului nr 3 (primul
sens giratoriu Tehodor Pallady-
Autostrada Soarelui), Catelu, Ilfov
Banca: BRD
IBAN: RO34BRDE441SV13182234410



**WAGO DOUBLE PIN HEADER; DIN-35 RAIL MOUNTING; PIN SPACING
7.5 MM; 7-POLE; GRAY**

Ratings per: IEC/EN 60664-1;
Ratings (note): Notice: Male connectors shall not be live when disconnected!;
Tensiune nominala (III/3): 500; V
Tensiune nominala de supratensiune (III/3): 6; kV
Tensiune nominala (III/2): 630; V
Tensiune nominala de supratensiune (III/2): 6; kV
Tensiune nominala (II/2): 1000; V
Tensiune nominala de supratensiune (II/2): 6; kV
Curent nominal: 12; A
Legend (ratings): (III / 2) % Overvoltage category III / Pollution degree 2;
Tensiune nominala UL (Use Group B): 300; V
Curent nominal UL (Use Group B): 15; A
Tensiune nominala UL (Use Group D): 300; V
Curent nominal UL (Use Group D): 10; A
Certificari: UL 1059;
Tensiune nominala UL 1977: 600; V
Curent nominal UL 1977: 15; A
Tensiune nominala CSA (Use Group B): 300; V
Curent nominal CSA (Use Group B): 15; A
Tensiune nominala CSA (Use Group D): 300; V
Curent nominal CSA (Use Group D): 10; A
Numar poli: 7;
Total number of potentials: 7;
Numar tipuri de conexiuni: 1;
Numar nivele: 1;
Distanta intre pini: 7.5 mm / 0.295 inch;
Latime: 53.2 mm / 2.094 inch;
Inaltime from upper-edge of DIN-rail: 15 mm / 0.591 inch;
Adancime: 42.5 mm / 1.673 inch;
Tip montaj: DIN-35 rail;
Tip contact (pluggable connector): Conector tata/fisa;
Connector (connection type): for pluggable connectors;
Mismatching protection: No;
Culoare: gray;
Material group: I;
Material izolator: Polyamide 66 (PA 66);
Flammability class per UL94: V0;
Contact material: Cupru electrolitic(ECu);
Contact plating: tin-plated;
Fire load: 0,202; MJ
Greutate: 8,8; g
Temperatura lucru: -60 ... +100 °C;
Product Group: 3 (Multi Conn. System);
Tip ambalare: BOX;
Tara de origine: DE;
GTIN: 4045454340353;
Customs tariff number: 85366990990;
Pret: 23,83 lei (TVA inclus)

Detalii online: <https://www.materialelectrice.ro/double-pin-header-din-35-rail-mounting-pin-spacing-7-5-mm-7-pole-gray-137759>