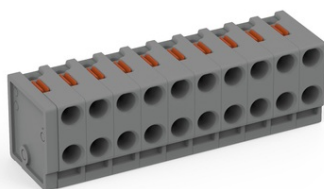


Furnizor: **Sc Trivolt Distribution SRL**  
Reg. com.: J23/3300/2016  
CIF: RO36421140  
Adresa: Strada Apusului nr 3 ( primul  
sens giratoriu Tehodor Pallady-  
Autostrada Soarelui), Catelu, Ilfov  
Banca: BRD  
IBAN: RO34BRDE441SV13182234410



**WAGO 2-CONDUCTOR MODULAR PCB CONNECTOR; PUSH-BUTTON;  
0.8 MM  $\bar{A}$ ; PIN SPACING 3.5 MM; 10-POLE; 0.50 MM $\bar{A}$ <sup>2</sup>; GRAY**

Ratings per: IEC/EN 60664-1;  
Tensiune nominala (III/3): 160; V  
Tensiune nominala de supratensiune (III/3): 2,5; kV  
Tensiune nominala (III/2): 160; V  
Tensiune nominala de supratensiune (III/2): 2,5; kV  
Tensiune nominala (II/2): 320; V  
Tensiune nominala de supratensiune (II/2): 2,5; kV  
Curent nominal: 2; A  
Legend (ratings): (III / 2)  $\hat{A}$ %™ Overvoltage category III / Pollution degree 2;  
Tensiune nominala UL (Use Group B): 300; V  
Curent nominal UL (Use Group B): 2; A  
Tensiune nominala UL (Use Group D): 300; V  
Curent nominal UL (Use Group D): 2; A  
Certificari: UL 1059;  
Tehnologie conexiune: PUSH WIRE®;  
Tip actionare: Push-button;  
Solid conductor: 0,14 ... 0,5 mm $\bar{A}$  / 26 ... 20 AWG;  
Conductor diameter: 0,4 ... 0,8 mm;  
Strip length: 6 ... 7 mm / 0.24 ... 0.28 inch;  
Conductor connection direction to PCB: 0; °  
Numar poli: 10;  
Total number of potentials: 10;  
Numar tipuri de conexiuni: 1;  
Numar nivele: 1;  
Distanta intre pini: 3,5 mm / 0.138 inch;  
Latime: 35,0 mm / 1.378 inch;  
Tip contact (pluggable connector): Conector mama/priza;  
Connector (connection type): for PCB;  
Mating direction to the PCB: 90; °  
PCB contact: THT;  
Culoare: gray;  
Material group: I;  
Material izolator: Polyamide 66 (PA 66);  
Flammability class per UL94: V0;  
Clamping spring material: Copper alloy;  
Contact material: Cupru electrolitic(ECu);  
Contact plating: tin-plated;  
Greutate: 4,5; g  
Temperatura lucru: -60 ... +105 °C;  
Tip ambalare: BOX;  
Tara de origine: PL;  
GTIN: 4055143959452;  
Customs tariff number: 85369010000;  
Pret: 0,00 lei (TVA inclus)

Detalii online: <https://www.materialelectrice.ro/2-conductor-modular-pcb-connector-push-button-0-8-mm-oe-pin-spacing-3-5-mm-10-pole-0-50-mm2-gray-136968>