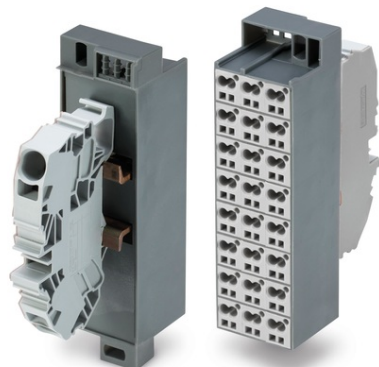


Furnizor: **Sc Trivolt Distribution SRL**  
Reg. com.: J23/3300/2016  
CIF: RO36421140  
Adresa: Strada Apusului nr 3 ( primul  
sens giratoriu Tehodor Pallady-  
Autostrada Soarelui), Catelu, Ilfov  
Banca: BRD  
IBAN: RO34BRDE441SV13182234410



**WAGO COMMON POTENTIAL MATRIX PATCHBOARD; MARKING 1-24;  
WITH 1 INPUT MODULE INCL. END PLATE; COLOR OF MODULES:  
GRAY; NUMBERING OF MODULES ARRANGED VERTICALLY; FOR 19"  
RACKS; SLIMLINE VERSION; 16,00 MM<sup>2</sup>; DARK GRAY**

Curent nominal: 76; A  
Curent nominal 2: 24; A  
Connection type (1): Side 1;  
Tehnologie conexiune: CAGE CLAMP®;  
Number of connection points (connection type): 1;  
Tip actionare: Operating tool;  
Connectable conductor materials: Copper;  
Solid conductor: 0.2 ... 16 mm<sup>2</sup> / 24 ... 6 AWG;  
Fine-stranded conductor: 0.2 ... 16 mm<sup>2</sup> / 24 ... 6 AWG;  
Strip length: 16 ... 17 mm / 0.63 ... 0.67 inch;  
Connection type 2: Side 2;  
Number of connection points: 2;  
Solid conductor 2: 0.08 ... 2.5 mm<sup>2</sup> / 28 ... 14 AWG;  
Fine-stranded conductor 2: 0.08 ... 2.5 mm<sup>2</sup> / 28 ... 14 AWG;  
Strip length 2: 8 ... 10 mm / 0.31 ... 0.39 inch;  
Wiring type: Front-entry wiring;  
Latime: 34.6 mm / 1.362 inch;  
Inaltime: 132 mm / 5.197 inch;  
Adancime: 80.7 mm / 3.177 inch;  
Design: slimline;  
Marking: 1 ... 24;  
Culoare: dark gray;  
Module Culoare: gray;  
Greutate: 216,3; g  
Tip ambalare: BOX;  
Tara de origine: DE;  
GTIN: 4055143628617;  
Customs tariff number: 85369010000;  
Pret: 401,21 lei (TVA inclus)

Detalii online: <https://www.materialelectrice.ro/common-potential-matrix-patchboard-marking-1-24-with-1-input-module-incl-end-plate-color-of-modules-gray-numbering-of-modules-arranged-vertically-for-19-racks-slimline-version-16-00-mm2-dark-gray-134404>