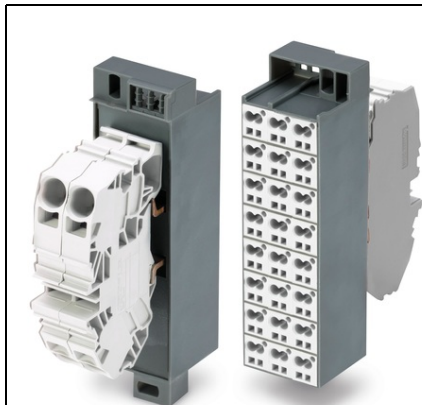


Furnizor: **Sc Trivolt Distribution SRL**
Reg. com.: J23/3300/2016
CIF: RO36421140
Adresa: Strada Apusului nr 3 (primul
sens giratoriu Tehodor Pallady-
Autostrada Soarelui), Catelu, Ilfov
Banca: BRD
IBAN: RO34BRDE441SV13182234410



**WAGO COMMON POTENTIAL MATRIX PATCHBOARD; MARKING 1-24;
WITH 2 INPUT MODULES INCL. END PLATE; COLOR OF MODULES:
WHITE; NUMBERING OF MODULES ARRANGED VERTICALLY; FOR
19" RACKS; SLIMLINE VERSION; 16,00 MM²; DARK GRAY**

Curent nominal: 76; A
Curent nominal 2: 24; A
Connection type (1): Side 1;
Tehnologie conexiune: CAGE CLAMP®;
Number of connection points (connection type): 2;
Tip actionare: Operating tool;
Connectable conductor materials: Copper;
Solid conductor: 0.2 ... 16 mm² / 24 ... 6 AWG;
Fine-stranded conductor: 0.2 ... 16 mm² / 24 ... 6 AWG;
Strip length: 16 ... 17 mm / 0.63 ... 0.67 inch;
Connection type 2: Side 2;
Number of connection points: 2;
Solid conductor 2: 0.08 ... 2.5 mm² / 28 ... 14 AWG;
Fine-stranded conductor 2: 0.08 ... 2.5 mm² / 28 ... 14 AWG;
Strip length 2: 8 ... 10 mm / 0.31 ... 0.39 inch;
Wiring type: Front-entry wiring;
Latime: 34.6 mm / 1.362 inch;
Inaltime: 132 mm / 5.197 inch;
Adancime: 80.7 mm / 3.177 inch;
Design: slimline;
Marking: 1 ... 24;
Culoare: dark gray;
Module Culoare: white;
Greutate: 259,5; g
Tip ambalare: BOX;
Tara de origine: DE;
GTIN: 4055143628655;
Customs tariff number: 85369010000;
Pret: 436,68 lei (TVA inclus)

Detalii online: <https://www.materialelectrice.ro/common-potential-matrix-patchboard-marking-1-24-with-2-input-modules-incl-end-plate-color-of-modules-white-numbering-of-modules-arranged-vertically-for-19-racks-slimline-version-16-00-mm2-dark-gray-134402>