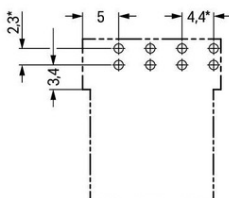


Furnizor: **Sc Trivolt Distribution SRL**
Reg. com.: J23/3300/2016
CIF: RO36421140
Adresa: Strada Apusului nr 3 (primul
sens giratoriu Tehodor Pallady-
Autostrada Soarelui), Catelu, Ilfov
Banca: BRD
IBAN: RO34BRDE441SV13182234410

WAGO PLUG FOR PCBs; ANGLED; 4-POLE; COD. A



* ± 0.05 mm
Drilled hole diameter: 1.3^{+0.1} mm

Note on Contact Resistance: approx. 1 mΩ; of contact resistance © approx. 0.25 mΩ; contact transition plug/socket;
Ratings per: IEC/EN 60664-1;
Tensiune nominala (III/3): 250; V
Tensiune nominala de supratensiune (III/3): 4; kV
Curent nominal: 16; A
Legend (ratings): (III / 3) %™ Overvoltage category III / Pollution degree 3;
Tensiune nominala UL 1977: 600; V
Curent nominal UL 1977: 12; A
Numar poli: 4;
Total number of potentials: 4;
Numar nivele: 1;
Ground function: with preceding ground contact;
Distanta intre pini: 4,4 mm / 0.173 inch;
Latime: 19,2 mm / 0.756 inch;
Inaltime: 15,7 mm / 0.618 inch;
Inaltime de la fata: 12,2 mm / 0.48 inch;
Adancime: 28,4 mm / 1.118 inch;
Lungimea pinului de contact: 3,5; mm
Solder pin dimensions: 1 x 0,8 mm;
Diametrul de gaurire cu toleranta: 1,3 (-0,1 ... +0,1) mm;
Coding: A;
Mating force of a plug-in connection: approx. 20 ... 70 N (depending on pole number);
Retention force of a plug-in connection: Locked: > 80 N;
Unmating force of a plug-in connection: Unlocked: approx. 20 ... 70 N (depending on pole number);
Number of mating cycles: >200, without resistive load 100, with resistive load IN = 16 A, tested (1.5 mm²/16 AWG);
Design: angled;
Marking: N 2/L 1/L';
Potential marking: N 2/L 1/L';
Application: General mains applications;
Tip contact (pluggable connector): Conector tata/fisa;
Connector (connection type): for PCB;
Mismating protection: Yes;
Mating direction to the PCB: 0; °
Locking of plug-in connection: locking lever;
Locking lever: yes;
PCB contact: THT;
Solder pin arrangement: 2 in-line solder pins/pole;
Number of solder pins per potential: 2;
Culoare: black;
Material izolator: Polyamide 66 (PA 66);
Clamping spring material: Chrome nickel spring steel (CrNi);
Contact material: Copper or copper alloy (surface-treated);
Fire load: 0,078; MJ
Greutate: 4,2; g
Processing temperature: -5 ... +40 °C;
Continuous operating temperature: -35 ... +85 °C;
Note on continuous operating temperature: Insulating parts for temperatures ≤ 105 °C;
Tip ambalare: BOX;
Tara de origine: PL;
GTIN: 4050821695707;
Customs tariff number: 85366990990;
Pret: 10,86 lei (TVA inclus)

Detalii online: <https://www.materialelectrice.ro/plug-for-pcb-angled-4-pole-cod-a-133399>