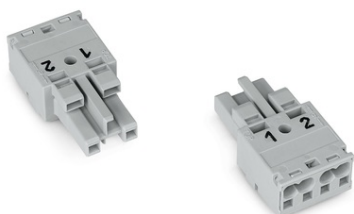


Furnizor: **Sc Trivolt Distribution SRL**
Reg. com.: J23/3300/2016
CIF: RO36421140
Adresa: Strada Apusului nr 3 (primul
sens giratoriu Tehodor Pallady-
Autostrada Soarelui), Catelu, Ilfov
Banca: BRD
IBAN: RO34BRDE441SV13182234410

WAGO SOCKET; 2-POLE; COD. B; 4,00 MM²; GRAY



Note on Contact Resistance: approx. 1 m Ω , of contact resistance $\text{\textcircled{C}}$ approx. 0.25 m Ω ,
contact transition plug/socket;
Ratings per: IEC/EN 60664-1;
Tensiune nominala (III/3): 250; V
Tensiune nominala de supratensiune (III/3): 4; kV
Curent nominal: 25; A
Legend (ratings): (III / 3) $\hat{\text{a}}$ %TM Overvoltage category III / Pollution degree 3;
Tensiune nominala UL 1977: 600; V
Curent nominal UL 1977: 23; A
Tehnologie conexiune: Push-in CAGE CLAMP $\text{\textcircled{R}}$;
Tip actionare: Operating tool; Push-in;
Nominal cross-section: 4 mm²;
Solid conductor: 0,5 ... 4 mm² / 20 ... 12 AWG;
Solid conductor; push-in termination: 1,5 ... 4 mm² / 16 ... 12 AWG;
Stranded conductor: 0,5 ... 2,5 mm² / 20 ... 14 AWG;
Fine-stranded conductor: 0,5 ... 4 mm² / 20 ... 12 AWG;
Fine-stranded conductor; with insulated ferrule: 0,25 ... 1,5 mm² / 20 ... 16 AWG;
Fine-stranded conductor; with uninsulated ferrule: 0,25 ... 2,5 mm² / 20 ... 14 AWG;
Fine-stranded conductor; with ferrule; push-in termination: 1,5 mm² / 16 AWG;
Strip length: 9 mm / 0.35 inch;
Note (strip length): see also packaging or instructions;
Numar poli: 2;
Numar total de conexiuni: 4;
Total number of potentials: 2;
Conductor entry direction to mating direction: 0; $\text{\textcircled{O}}$
Distanta intre pini: 10 mm / 0.394 inch;
Latime: 20 mm / 0.787 inch;
Inaltime: 12,9 mm / 0.508 inch;
Adancime: 37,5 mm / 1.476 inch;
Coding: B;
Mating force of a plug-in connection: approx. 20 ... 70 N (depending on pole number);
Retention force of a plug-in connection: Locked: > 80 N;
Unmating force of a plug-in connection: Unlocked: approx. 20 ... 70 N (depending on
pole number);
Number of mating cycles: $\text{\textcircled{I}}$ $\text{\textcircled{Z}}$ 200, without resistive load 100, with resistive load IN = 25
A, tested (4 mm²/AWG 12);
Marking: L N;
Protection type: IP20;
Note on protection type: In mated condition with strain relief housing: IP2xC (These
compact connectors are not designed for use in open, easily accessible areas.);
Potential marking: L N;
Tip contact (pluggable connector): Conector mama/priza;
Connector (connection type): for conductor;
Mismating protection: Yes;
Locking of plug-in connection: locking lever;
Locking lever: retrofittable;
Culoare: gray;
Material izolator: Polyamide 66 (PA 66);
Clamping spring material: Chrome nickel spring steel (CrNi);
Contact material: Copper or copper alloy (surface-treated);
Fire load: 0,114; MJ
Greutate: 6,6; g
Processing temperature: -5 ... +40 $\text{\textcircled{C}}$;
Continuous operating temperature: -35 ... +85 $\text{\textcircled{C}}$;
Note on continuous operating temperature: Insulating parts for temperatures \leq 105 $\text{\textcircled{C}}$;
Tip ambalare: BOX;
Tara de origine: DE;
GTIN: 4050821553137;
Customs tariff number: 85366990990;
Pret: 12,60 lei (TVA inclus)

Detalii online: <https://www.materialelectrice.ro/socket-2-pole-cod-b-4-00-mm2-gray-133101>