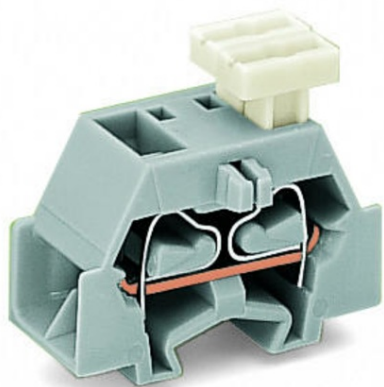


Furnizor: **Sc Trivolt Distribution SRL**
Reg. com.: J23/3300/2016
CIF: RO36421140
Adresa: Strada Apusului nr 3 (primul
sens giratoriu Tehodor Pallady-
Autostrada Soarelui), Catelu, Ilfov
Banca: BRD
IBAN: RO34BRDE441SV13182234410



WAGO 4-CONDUCTOR TERMINAL BLOCK; ON ONE SIDE WITH PUSH-BUTTON; WITH FIXING FLANGE; FOR SCREW OR SIMILAR MOUNTING TYPES; FIXING HOLE 3.2 MM $\tilde{\sim}$; 2.5 MM \hat{A} ²; CAGE CLAMP[®]; 2,50 MM \hat{A} ²; LIGHT GRAY

Tensiune nominala (III/3): 500; V
Tensiune nominala de supratensiune (III/3): 6; kV
Curent nominal: 24; A
Legend (ratings): (III / 3) \hat{A} TM Overvoltage category III / Pollution degree 3;
Tehnologie conexiune: CAGE CLAMP[®];
Tip actionare: Operating tool; Push-button;
Connectable conductor materials: Copper;
Solid conductor: 0,08 ... 2,5 mm² / 28 ... 14 AWG;
Fine-stranded conductor: 0,08 ... 2,5 mm² / 28 ... 14 AWG;
Strip length: 8 ... 9 mm / 0.31 ... 0.35 inch;
Numar poli: 1;
Numar total de conexiuni: 4;
Total number of potentials: 1;
Numar nivele: 1;
Wiring type: Side-entry wiring;
Latime: 10 mm / 0.394 inch;
Inaltime de la fata: 23,2 mm / 0.913 inch;
Adancime: 28 mm / 1.102 inch;
Design: horizontal type;
Tip montaj: Mounting flange;
Marking level: Side marking;
Culoare: light gray;
Fire load: 0,069; MJ
Greutate: 4,1; g
Product Group: 9 (Std. Chassis Mt. Blocks);
Tip ambalare: BOX;
Tara de origine: DE;
GTIN: 4044918613217;
Customs tariff number: 85369010000;
Pret: 4,84 lei (TVA inclus)

Detalii online: <https://www.materialelectrice.ro/4-conductor-terminal-block-on-one-side-with-push-button-with-fixing-flange-for-screw-or-similar-mounting-types-fixing-hole-3-2-mm-oe-2-5-mm2-cage-clamp-2-50-mm2-light-gray-132080>